

CONTEMPORARY RANGE | FLAT LID



Colours

Colour of the model shown: Manganese

Colours to be selected within the RAL tints, sablé or other coatings of the AkzoNobel Futura range.

The **bin body**, **lid** and **visibility strip** can be painted in **different colours**.

IMAGE SHOWN:
CONTEMPORARY EVOLUTION
REF : 20 0715 5000 0000

PRESENTATION

The **Contemporary** litter bin was designed to respond to current issues facing municipalities in the area of urban cleanliness.

This litter bin provides a **single solution** to problems associated with **paper waste, dog waste** and **cigarette butts**. It is optimised to **decrease the number of operations by sanitation workers, limit the number of objects in public areas and reinforce the aesthetics of the municipality**.

The different **styles**, wide selection of **colours** and **textures, options** and **features** mean the Contemporary bin ensures ease of use, adaptation to usage conditions and an understated design, highlighting the appeal and transparency of the urban setting.

DESCRIPTION

Litter bin with **liner**: stainless steel liner.

Or : Litter bin with **plastic bag holder** made of steel.

The **lid** is made of steel, and is 500 mm in diameter and 5 mm thick. It is supported by a stainless steel shaft mounted on hinges. When the lid is closed, the impact is absorbed by 2 rubber stops.

The bin body is made of 3 mm-thick, laser-cut steel.

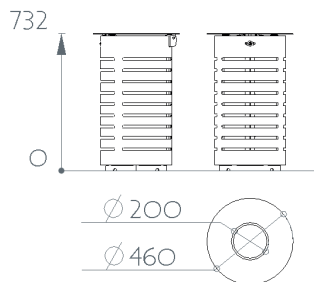
The different components are attached to each other with stainless steel bolts.

The steel components are zinc-coated then treated with our **Powder Blast** process (after cleaning and shot-blasting, the parts are coated with an initial layer of epoxy powder and a second layer of polyester powder) to provide rust-proofing and to increase its lifespan.

4 sealing points (Ø 15 mm).

Delivered assembled.

DIMENSIONS

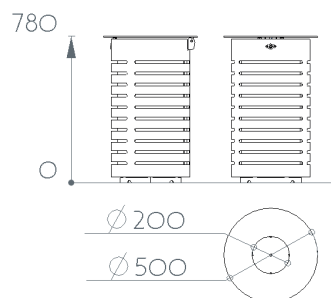


45-liter litter bin

Ref: 20 07x1 Bxxx xxxx
Weight* with liner: 30 kg

70-liter litter bin

Ref. (bag holder) 20 07x1 Sxxx
Weight* with bag holder: 28 kg



70-liter litter bin

Ref. (with liner) 20 07x5 Bxxx xxxx
Weight* with liner: 36 kg

95-liter litter bin

Ref. (with bag holder) 20 07x5 Sxxx xxxx
Weight* with bag holder: 32 kg

*Weight of models with simple lid (without features).



CONTEMPORARY RANGE | FLAT LID

FINISHES



Evolution



Classic



Plus



Bamboo



Pebbles



Nature



Roots

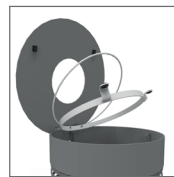
OPTIONS



Liner

The liner is made of stainless steel for longer service life and high resistance to usage conditions in public areas.

	45 liters	70 liters	95 liters
Liner	x	x	
Plastic bag holder		x	x



Plastic bag holder

The plastic bag holder in steel is supported by a shaft mounted on hinges. It is fitted with a lifting hoop and a rigid ring. The bag holder folds back onto the hoop to ensure the bag is held firmly in place. The legs of the bag holder are equipped with a plastic stop to absorb shocks when the lid is closed.



Front door*

The front door provides easy access to the liner. There are handles on the liner that the worker can easily grasp, rather than having to lift the bin from above.

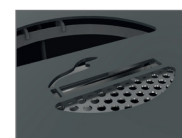
*Option solely available on 45-liter and 70-liter bins with liner.

FEATURES



Lock

The stainless steel lock is self-closing. A triangular key, supplied by Sineu Graff, is used to open it.



Ashtray

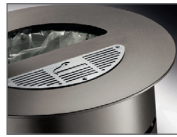
The ashtray is made of stainless steel. Cigarette butts are automatically emptied into the waste bag or the liner, when the lid is opened. This system avoids additional handling and means workers will not come in contact with the cigarette butts. Ashtray capacity: 1 liter = 400 butts.



The mark of responsible forestry

CONTEMPORARY RANGE | FLAT LID

➤ FEATURES



| Cigarette snuffer plate

The cigarette snuffer plate is made of stainless steel. It provides users with a surface that they can stub cigarettes out on. The surface area has a cigarette-smoke swirl cut by laser, so users can easily recognise it. The snuffer plate is made of two 2-mm thick, superimposed, passivated stainless steel baseplates to ensure the painted components remain undamaged. The snuffer plate is directly fixed to the basket body by domed-head stainless steel rivets.



The snuffer plate can be combined with the **dog waste bag dispenser** on a **single lid**.



| Dog waste bag dispenser

The dog waste bag dispenser is made of stainless steel. There is a laser-cut image of a dog on the lid to indicate the purpose of the bin. The dog waste bag roll is accommodated in a receptacle. A slot in the lid enables users to remove easily the bag from its container. The special shape of the mechanism has been designed to prevent the roll from being removed from the container. Operators can install the roll easily, without the need for specific operations or tools.



The dog waste bag dispenser can be combined with the **cigarette snuffer plate** on a **single lid**.



| Visibility strip

The visibility strip is composed of a folded, laser-cut steel part screwed into the back of the bin.

Its functions include :

- meeting the needs of disabled persons. The strip colour contrasts with the bin body, thus allowing visually impaired persons to distinguish the bin on public footpaths.
- use as an effective communication tool. The city can use different colours to distinguish between different types of waste, and it can also be used to promote events.

The visibility strip can be combined with all other available features.

The strip is available in **all colours** and can be **customised by laser cutting**. The lid and/or body can be **painted in a different colour from the strip**.



| Sorting

The bin lid has two wide openings to make waste disposal and sorting easier. Colour codes together with a "recycling" cut-out are available to identify the types of waste to be deposited in the bin. This model contains two stainless steel semi-liners with handles.

➤ Other available materials for body and lid : Stainless steel and Corten steel

