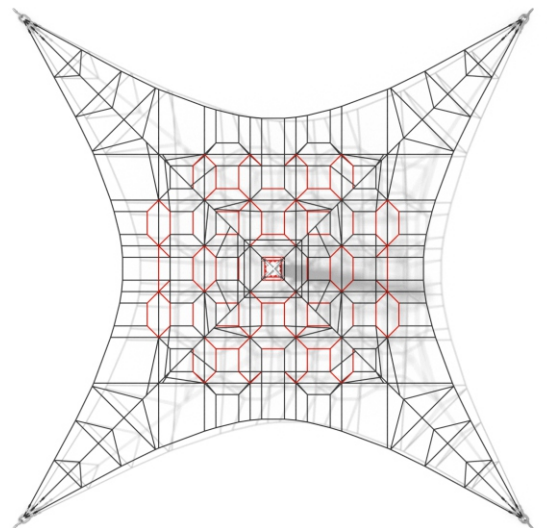


## Information about the product

Dimensions	910 x 910 cm
Safety zone	1210 x 1210 cm
Safety zone area	111 m <sup>2</sup>
Overall height	650 cm
Free fall height	105 cm
Amount of users	35
Product complies with EN 1176-1:2017-12	Yes
Availability of spare parts	Yes
Age range	3-12

According to EN 1176-1:2017-12 norm, the product requires applying a safety surface according to the product's free fall height.



## Functions



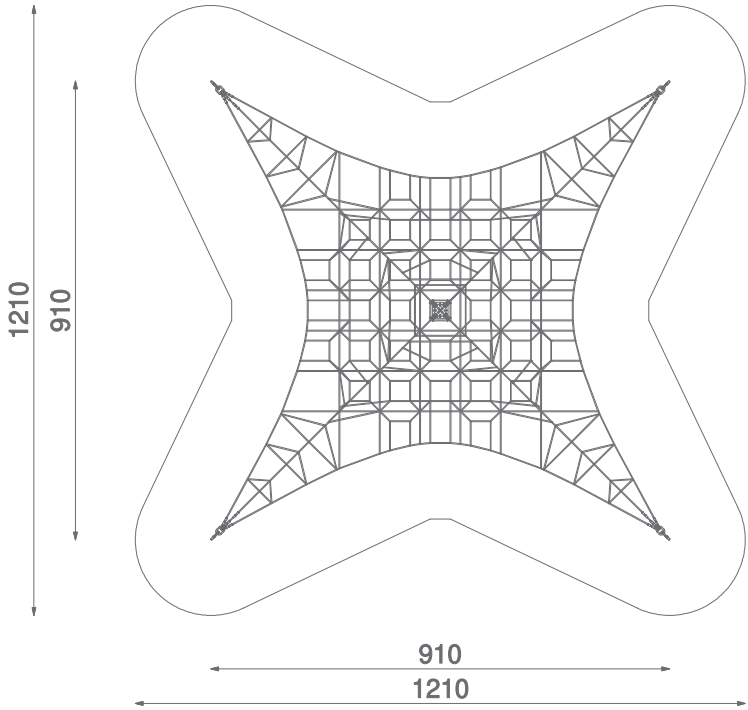
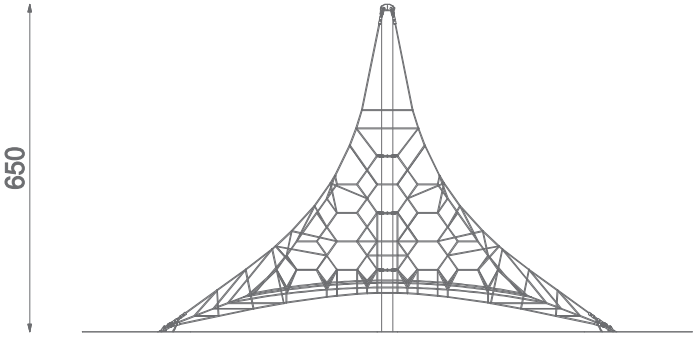
Climbing



Balancing

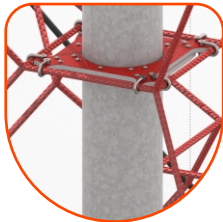


Socializing



SCALE 1:150

**Materials**



Steel construction:  
Ø219 pipes, hot-dip galvanized



Polypropylene ropes pp -  
multisplit type with a steel  
core and a diameter of 18  
mm