



Information about the product

Dimensions	ca. 267 x 189 cm
Safety zone	ca. 567 x 489 cm
Safety zone area	ca. 23,2 m ²
Overall height	ca. 191 cm
Free fall height	ca. 99 cm
Amount of users	11
Highest element	190 cm
Heaviest element	106 kg
Product complies with EN 1176-1:2017-12	Yes
Availability of spare parts	Yes
Age range	1-8

According to EN 1176-1:2017-12 norm, the product requires applying a safety surface according to the product's free fall height.



Functions



Socializing



Grasping



Emotion regulation



Creativity



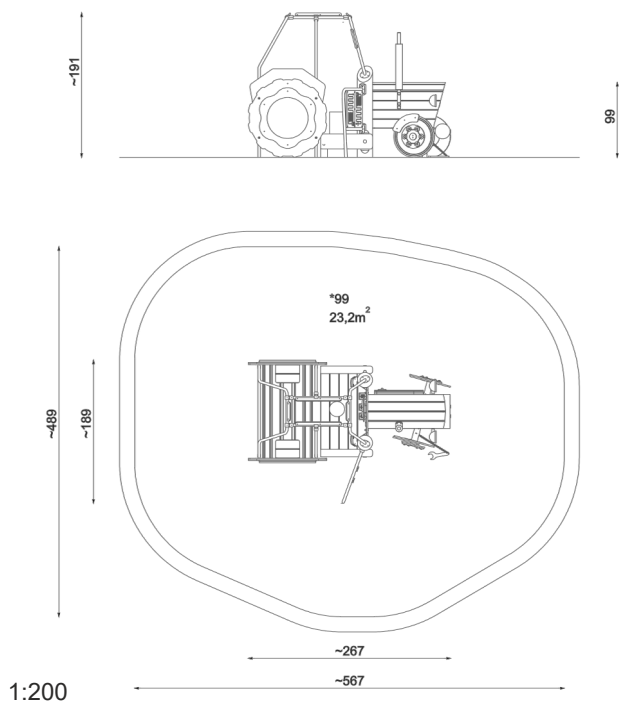
Role-playing



Logical thinking



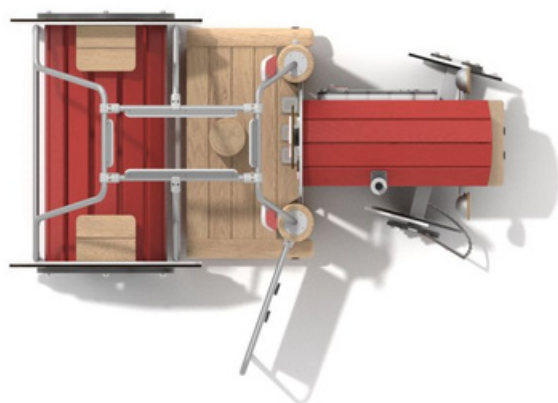
Educational boards



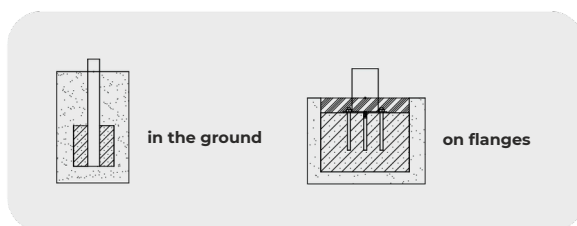
Due to the height of the free fall of the product, the EN 1176-1:2017-12 norm allows following types of fall-absorbing surfaces:

Material	Description	Minimal layer thickness mm
Top layer of the soil		
Turf		
Bark	Chipped bark of coniferous trees (no wood-based materials), the size of the pieces between 20mm to 80 mm	300
Wood chips	Mechanically fragmented wood without bark and leaves, size of the pieces between 5 mm to 30 mm	300
Sand or gravel	Particle size between 0,25 mm to 8 mm	300
Synthetic material	Synthetic material with an approval for free fall heights ≥ 99 cm	

All types of surfaces need to be preserved by adding bulk material and removing extraneous matters. Broken glass is considered to be most hazardous.



Installation method



Warranty



Lifetime

The warranty covers the durability of components made of HDPE (high-density polyethylene), as well as the structural integrity of components made of black steel that has been powder galvanized and powder coated, stainless steel, and components made of hot-dip galvanized steel.



10 years

The Guaranty covers all flaws of the elements made of HPL, HDPE, stainless steel, hot-dip galvanized steel, wooden elements (pine, spruce), revealed during usage, which arise from manufacturing reasons.



5 years

The Guaranty covers all flaws of the elements made of powder coated steel, aluminum, laminate, ropes, elements made in rotomoulding technology, elements made of polyamid, polypropylene elements, revealed during usage, which arise from manufacturing reasons.



2 years

The Guaranty covers all flaws of the elements made of rubber, moving elements (bearings, joints), electronic elements, elements made of EPDM, elements made of plywood and other not mentioned before revealed during usage, which arise from manufacturing reasons.

Product description

Playground Equipment in the form of a tractor

Dimensions:

- Equipment Dimensions: ca. 267 x 189 cm
- Safety zone: ca. 567 x 489 cm
- Total height: ca. 191 cm
- Free fall height: 99 cm

A structure designed to resemble a tractor, made primarily from **robinia acacia wood**. The individual components are made from the following materials:

- **Beams** made of robinia wood with a diameter of **13–20 cm**
- **Platform** made of robinia acacia wood boards
- **Tunnel simulating the rear wheels** made of acacia wood boards, connected at both ends with 15 mm thick HDPE polyethylene plates and 15 mm thick waterproof plywood
- **Tractor bonnet** made of robinia wood boards, with decorative elements simulating headlights and an exhaust pipe, made of AISI 304 stainless steel, bead-blasted for a smooth finish
- **Cabin frame structure** made of stainless steel pipes bead-blasted, with a diameter of 33.7 x 2.0 mm
- **Dashboard panel** made of 15 mm thick HDPE polyethylene. The panel includes:
 - **Steering wheel** made from a combination of 15 mm HDPE polyethylene and 13 mm HPL plate – the steering wheel is fully rotatable
 - **Fuel and oil level indicators**, made of 15 mm thick HDPE polyethylene
 - **Gear shift disc** – a sliding element that allows children to change gears by moving along designated tracks

Panels and interactive elements:

- **“Pistons” Game Panel:** Turning the handle sets the pistons in motion, simulating the operation of an engine. The panel is made from a combination of 15 mm HDPE polyethylene and 6 mm polycarbonate.
- **“Races” Game Panel:** A colourful panel designed to resemble tractor doors, made of 15 mm thick HDPE polyethylene. Children can race small cars along marked routes – whoever reaches the finish line first wins. The game supports the development of manual dexterity.
- **“Front Wheel” Game Panel:** The wheel is made of 15 mm thick waterproof plywood, with decorative elements made of 15 mm thick coloured HDPE polyethylene. A 15 mm thick HDPE spanner is attached to the wheel with a stainless steel chain. The rotating wheel combined with the action of tightening bolts offers a unique play experience that enhances motor coordination.
- **Side mirrors** made of a combination of 15 mm thick HDPE polyethylene and mirror-effect plexiglass, resistant to various weather conditions.

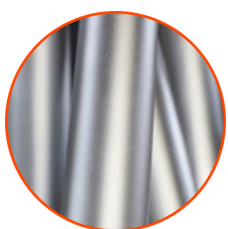
The equipment includes a minimum of:

- | | |
|--|-------------------------------------|
| · 1 x tractor structure | · 1 x “Pistons” game panel |
| · 1 x rear wheels forming a tunnel | · 2 x mirrors |
| · 1 x exhaust pipe | · 1 x dashboard |
| · 1 x “Races” game panel | · 2 x benches mounted on the tunnel |
| · 2 x front wheels, including 1 x “Front Wheel” game panel | · 1 x seat made from a robinia beam |

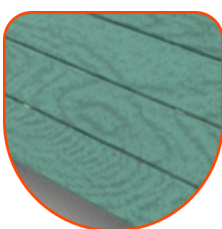
Materials



Natural posts made of robinia acacia wood, protected against splitting.



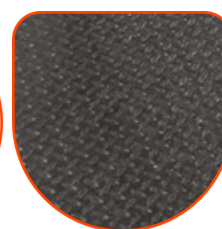
A solid structure made of AISI 304 stainless steel, cleaned using the glass bead blasting process, fully resistant to weather conditions.



Robinia painted with a special water-based, fast-drying, vapour-permeable paint, providing a semi-gloss finish



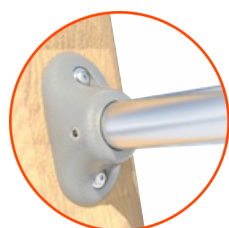
Elements made of colourful 13 mm HPL, in the highest quality, totally damp-proof and resistant to UV.



Anti-slip 15 mm platform.



Plates of the walls made of colourful triple layered 15 mm HDPE polyethylene, in the highest quality, totally damp-proof and resistant to UV.



A system of connectors and clamps made of strong aluminium alloys.