

1107

ACTIVE



SLIDING



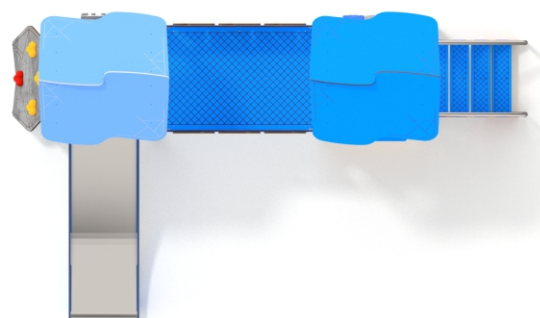
SOCIALIZING



CLIMBING

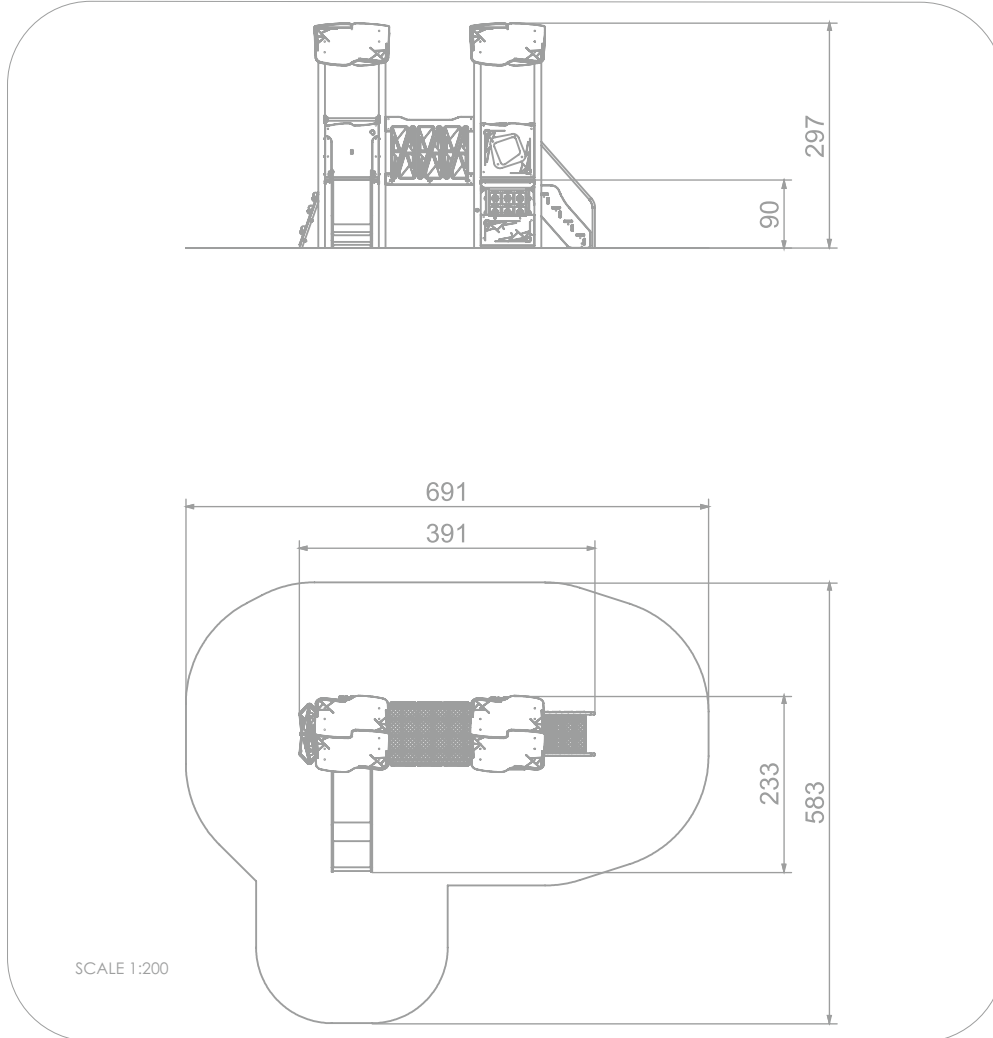
INFORMATION ABOUT THE PRODUCT

| | |
|--|-------------------|
| Dimensions | 233 x 391 cm |
| Safety zone | 583 x 691 cm |
| Safety zone area | 30 m ² |
| Overall height | 297 cm |
| Free fall height | 90 cm |
| Amount of users | 13 |
| Product complies with EN 1176-1:2017-12 | YES |
| Availability of spare parts | YES |
| Age range | 3-12 |
| According to EN 1176-1:2017-12 norm, the product requires applying a safety surface according to the product's free fall height. | |



1107

ACTIVE



MATERIALS:

| | | | | |
|--|--|--|---|--|
| CONSTRUCTION ELEMENTS MADE OF STAINLESS AISI 304 | PLATES OF THE WALLS MADE OF COLOURFUL TRIPLE LAYERED 15 MM HDPE POLYETHYLENE, IN THE HIGHEST QUALITY | ANTI-SLIP BLUE 13 MM HPL PLATFORM PLATE SERIES: ACTIV | THE TIC TAC TOE GAME IS MADE OF POLYETHYLENE RATIONALLY MOLDED WITH SYMBOLS ON THE FORM | |
| | | | | |
| PLATES OF THE WALLS AND PLATFORMS MADE OF COLOURFUL 13 MM HPL IN THE HIGHEST QUALITY | SLIDES MADE OF STAINLESS STEEL AISI 304, SIDE PANELS MADE OF HDPE POLYETHYLENE | PLATE AND ROPE CONNECTORS MADE OF INJECTION MOLDED POLYAMIDE | SYSTEM OF CONNECTORS AND CLAMPS MADE OF STRONG ALUMINUM ALLOY | SOLID CONSTRUCTION MADE BLACK STEEL S235JR CLEANED IN THE SANDBLASTING PROCESS |
| | | | | |

