

00804

SMART



SLIDING



SOCIALIZING



CLIMBING

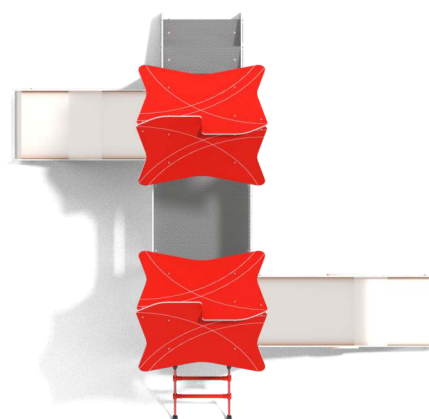


SENSORIAL
INTEGRATION

INFORMATION ABOUT THE PRODUCT

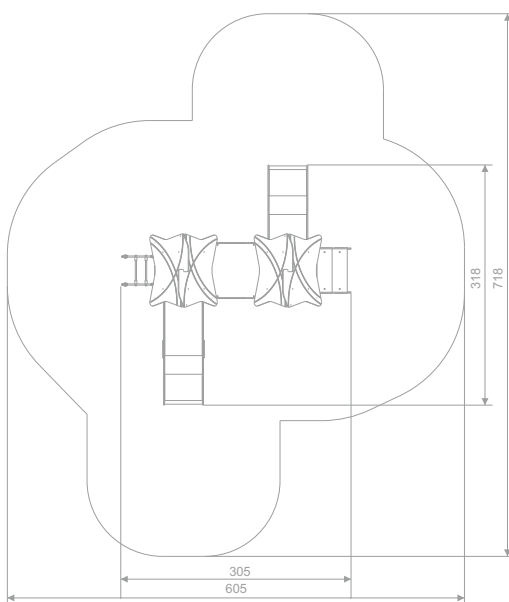
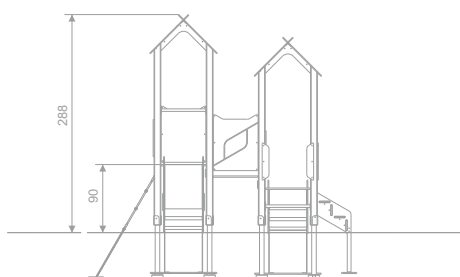
| | |
|---|---------------------|
| Dimensions | 305 x 318 cm |
| Safety zone | 605 x 718 cm |
| Safety zone area | 28,4 m ² |
| Overall height | 288 cm |
| Free fall height | 90 cm |
| Amount of users | 11 |
| Product complies with EN 1176-1:2017-12 | YES |
| Availability of spare parts | YES |
| Age range | 1-8 |

According to EN 1176-1:2017-12 norm, the product requires applying a safety surface according to the product's free fall height.



00804

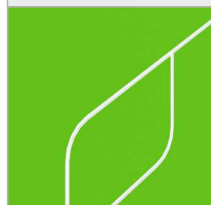
SMART



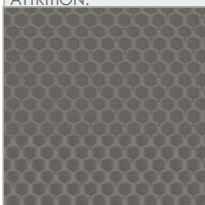
SCALE 1:100

MATERIALS:

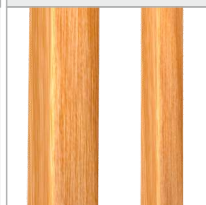
PLATES OF THE WALLS MADE OF 12 MM HDPE IN THE HIGHEST QUALITY



ANTI-SLIP ANTHRACITE 10MM HPL PLATFORM PLATE WITH A VERY HIGH RESISTANCE TO WEATHER CONDITIONS AND ATTRITION.



SOLID CONSTRUCTION MADE OF WOOD, 90x90 MM



SLIDES MADE OF STAINLESS STEEL AISI 304, SIDE PANELS MADE OF HDPE POLYETHYLENE

